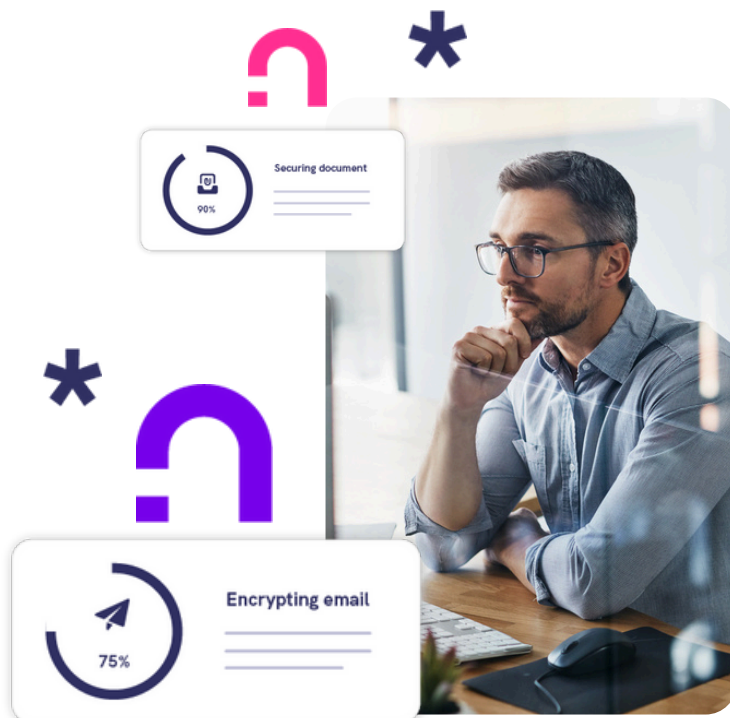




DATA SHEET

Maillock Enterprise

Exchange confidential information using our Secure Email Gateway, available as a virtual appliance for easy on-premise deployment or through our fully managed cloud service. Maillock's Secure Email Gateway integrates seamlessly with existing mail flows, respecting CRM, anti-virus, server-side signatures, and data loss prevention policies.



FUNCTION	DESCRIPTION
Encryption triggers	Trigger encryption using rules in your mail server, such as recognising a keyword in the subject line, a specific email domain, or an X-header.
Secure read and reply	All Maillock message recipients are offered a 'zero download' option to read messages for free without creating an account. Recipients can reply securely at no cost, either as a guest or using a free Maillock account.
Storage location	By default, Maillock stores encrypted content as BLOB (Binary Large Object) files in Microsoft Azure data centres within the EU. Other self-hosted storage options are available where this arrangement doesn't meet your information security or compliance requirements.
Storage period	Messages are accessible in the live system for 365 days, then archived for 6 years. During setup, we'll review this model with you to make sure it meets your information security and compliance needs.
Hosting	Use our fully managed cloud hosting for the secure email gateway, or choose to host and manage it in your own infrastructure.
Branding	Administrators can upload your company logo to the portal, applying your branding to Maillock notification emails and the recipient experience. This shows customers you take their information security seriously.
Microsoft 365 compatible	Maillock Gateway appliances integrate easily with your Microsoft 365 email flow.
Webhooks integration	Our webhooks provide real-time feedback on message activity - including opens, downloads, and revokes - for use in analytics.
Operator administration	For on-premise deployments, the operator admin site supports system configuration and health monitoring.